

WHITEMAN LUMBER CO.

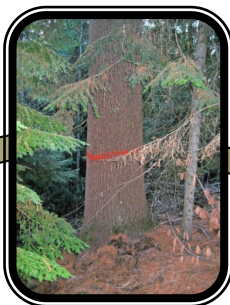
THE OLDEST CONTINUOUSLY RUNNING SAWMILL IN IDAHO

SUMMER/FALL 2010 NEWSLETTER ISSUE 2



IN THIS ISSUE...

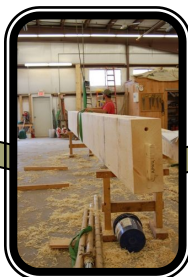
From the forest to the frame



This is a photographic history of a couple of timbers we cut last spring. They were for a New Energy Works project in New York. The Idaho White Pine was harvested on State of Idaho property not far from the mill. The logging season had not begun and New Energy Works was anxious for the timbers. With the cooperation of a few governmental agencies (it does sometimes happen) and a willing logger we were able to get on the roads early and bring the logs to the mill. It may be difficult to see from the pictures but we were able to cut two 10" x 24" x 32' timbers from one log. It was great.



So, if you need something special give us a call. We have installed a second de-humidification kiln in order to more rapidly supply our customers. We have a fantastic inventory of Douglas-fir and Engelmann Spruce logs.



WE SELL THE WAY A TIMBER LOOKS
AS MUCH AS WE SELL WHAT IT DOES.
GIVE US A TRY!

Contact Us: Email us at bradcorkill@whitemanlumber.com or call 877-682-4602

www.whitemanlumber.com